

Meetings

Loughton & Great Holm Parish Council meet at 7.30pm on the 3rd Monday of the month, the venue alternating between Loughton & Great Holm. All residents are warmly invited to attend. See Parish website for venue, agendas, minutes & documents.

Members

The current elected and co-opted members of Loughton & Great Holm Parish Council (all of whom are unpaid volunteers) are :-



Peter Todd, Chairman
Loughton ward
0782 4437466
chairman@loughtonandgreatholm-pc.gov.uk
Twitter: @petertodd_



Hilary Dyer
Great Holm ward
hilary.dyer@loughtonandgreatholm-pc.gov.uk



Zoë Nolan
Loughton ward
01908 560454
zoe.nolan@loughtonandgreatholm-pc.gov.uk
Twitter: @zoenolan3



Barry Barrington
Great Holm ward
barry.barrington@loughtonandgreatholm-pc.gov.uk



Andy Dransfield
Loughton ward
07973 549671
andy.dransfield@loughtonandgreatholm-pc.gov.uk



Ray Harrison
Great Holm ward
07802 400366
ray.harrison@loughtonandgreatholm-pc.gov.uk



Andy Sargent
Loughton ward
andy.sargent@loughtonandgreatholm-pc.gov.uk



Don Hoyle
Great Holm ward
donald.hoyle@loughtonandgreatholm-pc.gov.uk



Andy Lovett
Loughton ward
andy.lovett@loughtonandgreatholm-pc.gov.uk

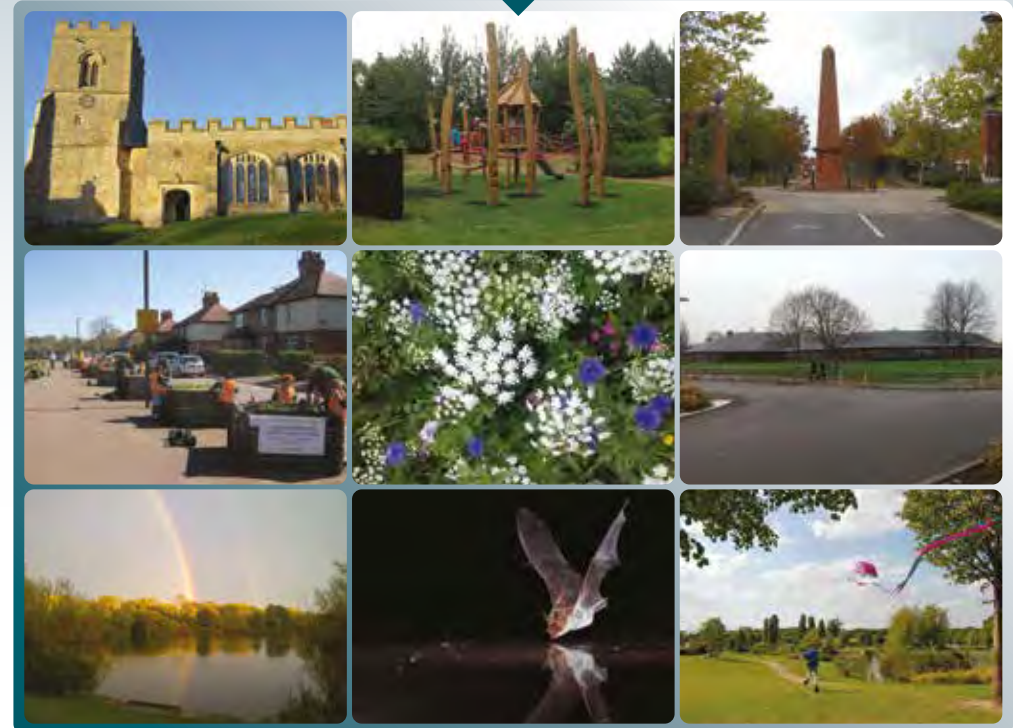


Peter Ballantyne
Great Holm ward
peter.ballantyne@loughtonandgreatholm-pc.gov.uk



LOUGHTON & GREAT HOLM PARISH COUNCIL

Precept Leaflet 2014-15



 Find us on **Facebook** Loughton and Great Holm Parish Council

 **twitter** Twitter @LGH_PC

Residents Survey 2014

Loughton & Great Holm Parish Council wants to know about the issues of concern to you, and what you think about the work of the Council. Have your say in our online residents opinion survey for 2014 here <http://svy.mk/1iL7Zw8>

parish.clerk@loughtonandgreatholm-pc.gov.uk

www.loughtonandgreatholm-pc.gov.uk

In 2013, Loughton & Great Holm Parish Council:-

Services

- Operated allotments efficiently & updated the allotment rules
- Provided a dog hygiene and litter bin service to improve the local environment
- Worked together with All Saints Church to formally open a new graveyard for all residents of the Parish
- Provided children's outdoors play sessions in school holidays in Loughton and Great Holm via MK Play Association
- Worked with MK Council to take over landscaping maintenance services from 1st April 2014
- Acquired the freehold of the Loughton sports ground, pavilion and car park and started work on improvements

Representation

- Supported the successful application for the registration of a village green in Great Holm
- Supported complaints from residents about noise nuisance from the Buszy
- Established a dedicated Parish Council Planning Committee to scrutinise, investigate, consult and make representations about local planning applications
- Held two well-attended public meetings to consult residents about the planning application for 104 new residential houses on the park land at Loughton Lodge and Badminton Centre site. Actively negotiated with stakeholders on the planning application to seek the best outcome for local residents
- A contested election for a vacant seat on the Parish Council took place
- Attended regular meetings with other Parish Councillors in the MK Council Parish forum.
- 13 meetings of the Full Parish took place, plus meetings of the Finance & Staff Committees & Planning Committees

Policy

- Conducted a public consultation on a review of the Loughton Conservation Area
- Agreed an amended scheme of parking restrictions for Loughton in consultation with MK Council, and following the public consultation
- Made representation on the MK Bowl redevelopment brief

Projects

- Opened a fabulous new children's play area which cost £100k
- Made grants to develop local community groups
- Funded various projects by the Neighbourhood Action Group including the River Birch trees on the village green in Great Holm
- Revitalised the Millennium Meadow in Loughton as a wildflower meadow
- Funded the restoration of the planters outside Loughton School
- Restored the car park at Loughton Sports ground

Community Engagement

- Published and delivered Spring and Autumn Parish newsletters
- Surveyed residents opinions and published the results
- Met monthly with the Police to combat crime
- Launched a new facebook presence, maintained a twitter channel & website, created a monthly email news update for all residents to subscribe to



Loughton & Great Holm Parish Council is largely funded from the parish Precept, which is part of the Council Tax collected by Milton Keynes Council. This is the projected budget for the financial year 2014-15. An annual report of the Parish Council's activities is available on the Parish website.

The Parish Council precept for 2014-15 has been frozen (a 0% rise on last year), which was £32.05 per annum on a Band D property. The average Parish Precept for MK Parishes is £62.93, so our Precept is about half of the average, and amongst the lowest rates of Parishes in MK.

Loughton & Great Holm Parish Council Budget

BUDGET	
Year ending 31 st March 2015	£
Income	
Precept	£70,000
Grants	£58,500
Pavilion rent	£2,650
Allotments	£500
Deposit account interest	£50
Subtotal	£131,700
Expenditure	
Landscape maintenance	£60,000
Clerk- Salary; E'er NI conts & pension conts	£23,750
Youth programme	£10,000
Loughton sports ground premises improvements	£10,000
Childrens play projects Loughton & Gt Holm	£4,500
Dog Hygiene bins service	£4,000
Pavilion rent/repair fund	£2,650
Grants	£2,000
Newsletters/communications	£1,500
Conservation area review	£1,500
Office equipment (PCs/software/copiers)	£1,000
Clerk - Expenses	£1,000
Sponsoring NAG local improvements	£1,000
Insurance	£750
Hire of Halls/ meeting space	£750
BALC membership	£750
Fees/Training	£500
Accountancy	£500
Post and stationery; office supplies	£500
Parish notice boards maintenance	£500
Millenium wild flower Meadow works	£500
Graveyard wall and engraved stone contribution	£500
Allotments	£350
Subtotal	£128,500
NET PROFIT/(LOSS)	£3,200